



Station Approach, Tadworth

The PERSONAL Agent

Guide Price £235,000

Leasehold

- One bedroom apartment
- Modern fitted kitchen with appliances
- No onward chain
- Top floor
- Good size sitting/dining room
- Double sized bedroom
- Attractive Vaulted Ceilings
- Double glazing and gas central heating
- Centre of village location
- Close to shops, restaurants, and train station

Nestled in the heart of Tadworth village, this stylish one bedroom apartment offers a unique opportunity to reside in a landmark building, formerly the Barclays bank.

The property boasts a modern fitted kitchen complete with integrated appliances, perfect for those who enjoy cooking and entertaining. The vaulted ceilings add an element of spaciousness and character, creating a bright and airy atmosphere throughout the flat.

This charming residence features a well appointed reception room, ideal for relaxation or hosting guests. The bedroom is designed for comfort, providing a peaceful retreat at the end of the day. There is also a modern contemporary style bathroom equipped to



meet your daily needs.

With double glazing and gas central heating, this apartment ensures warmth and energy efficiency, making it a practical choice for modern living. The location is particularly advantageous, as it is just moments away from a variety of shops, restaurants, and the train station, offering excellent transport links for commuters to London Bridge.

In addition there are acres of beautiful open countryside on the doorstep or nearby at Epsom Downs and Walton Heath.

The nearby A217 road link gives easy access to larger towns including Banstead, Reigate and Epsom and the

M25 at junction 8.

Tenure - Leasehold

Length of lease (years remaining) - 120

Annual ground rent amount (£) - 249 PA

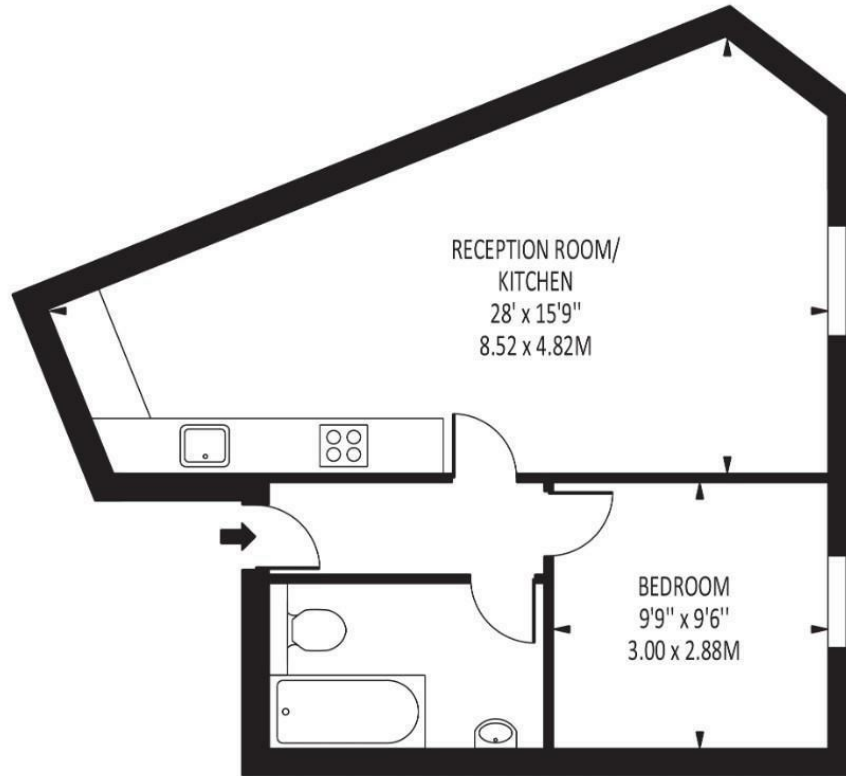
Annual service charge amount (£) - 762 PA

Council tax band - B

PLEASE NOTE: Whilst we believe the information above to be correct, we are unable to guarantee this information until such time as we have formally verified it with the sellers. Therefore you are advised to clarify any information with your chosen legal representative before proceeding with the purchase of this property.







Energy Efficiency Rating		
	Current	Potential
Very energy efficient - lower running costs		
(92 plus) A		
(81-91) B		
(69-80) C	78	78
(55-68) D		
(39-54) E		
(21-38) F		
(1-20) G		
Not energy efficient - higher running costs		
England & Wales		EU Directive 2002/91/EC

Disclaimer: For Illustration Purposes only

This floor plan should be used as a general outline for guidance only and does not constitute in whole or in part an offer of contract. Any intending purchaser or lessee should satisfy themselves by inspection, searches, enquiries and full survey as to the correctness of each statement. Any areas, measurements or distances quoted are approximate and should not be used to value a property or be the basis of any sale or let.

EPSOM OFFICE
2 West Street
Epsom, Surrey, KT18 7RG
01372 745 850

STONELEIGH/EWELL OFFICE
62 Stoneleigh Broadway
Stoneleigh, Surrey, KT17 2HS
020 8393 9411

BANSTEAD OFFICE
141 High Street
Banstead, Surrey, SM7 2NS
01737 333 699

TADWORTH OFFICE
Station Approach Road
Tadworth, Surrey, KT20 5AG
01737 814 900

LETTINGS & MANAGEMENT
157 High Street
Epsom, Surrey KT19 8EW
01372 726 666

The
PERSONAL
Agent

The Personal Agent Ltd. Registered office: 2A Boston Rd, Henley-on-Thames RG9 1DY.
Registered in England No. 4398817.



Please Note: Whilst every attempt has been made to ensure the accuracy of the floorplans contained here, measurements of doors, windows and room areas are approximate and no responsibility is taken for any error, omission or mis-statement. These plans are for representation purposes only and should be used as such by and prospective purchaser. The services, systems and appliances listed in the specification have not been tested by The Personal Agent and no guarantee as to their operating ability or their efficiency can be given. All images and text used to advertise our properties are for the sole use of The Personal Agent Ltd.

